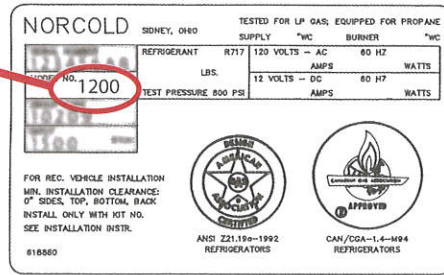


To determine if your Norcold Refrigerator is on Recall



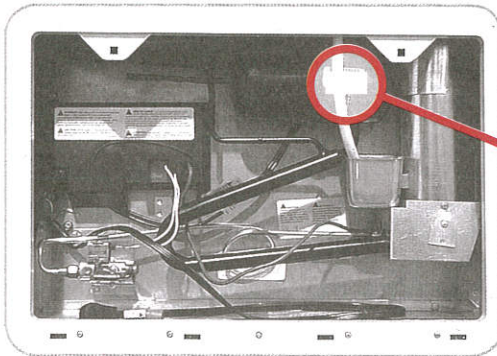
Found in RV model years from 1997-2011

1. Locate the Root Model Number and Refrigerator Serial Number



With serial numbers between 315525-13088811.

All Norcold refrigerators have an identification panel with model number on the inside, upper right.



2. Find the Cooling Unit Serial Number

With Cooling Unit serial numbers between 700000-13085759.

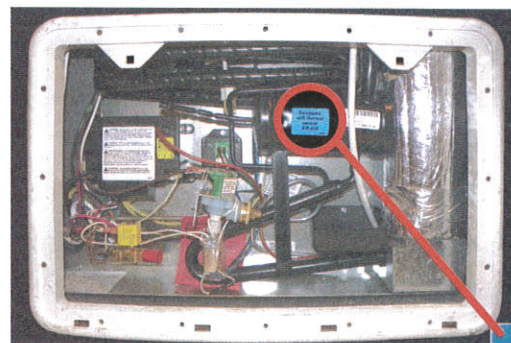
Remove the refrigerator's intake vent cover on the exterior of the vehicle to find the cooling unit's serial number, in plain sight on the unit's lower right, as shown here.

3. See if the new Safety Device has already been installed



Retrofitted with thermal sensor # R-010
(800) 767-9101

If your refrigerator has this Yellow Tag, the new Safety Device has already been retrofitted on your refrigerator.



Equipped with thermal sensor # P-010
634712

If your refrigerator has this Blue Sticker, the new safety device was installed when originally manufactured.

If your refrigerator has either a Yellow Tag or Blue Sticker, it is NOT on Recall and no further action is required.

No Yellow Tag or Blue Sticker? Your 1200, 1201, 1210 or 1211 is on Recall.

Refrigerators on Recall can cause a fire resulting in property damage, injury or death if this new safety device is not installed.

If your refrigerator is on Recall, see the other side of this letter and call your Dealer for immediate action.

WARNING: if your refrigerator has already been retrofitted with an HTS (indicated by a yellow tag) or equipped with an HTS (indicated by a blue label), do not attempt to alter or disable the safety device for any reason. Doing so could jeopardize your safety and potentially cause injury or death.

Questions: call **1.800.767.9101** or go to **www.Norcold.com/Recall**