



S U B U R B A N

DIRECT VENT SEALED COMBUSTION TRAVEL HOME HEATER

MODEL GT6-3A, GT6-3S

GENERAL INFORMATION

Your Suburban Travel Trailer Heater incorporates a sealed combustion system. Air for combustion is drawn from outside, and the combustion products are expelled outdoors.

Your heater was thoroughly inspected before it left the factory. If any parts are found to be damaged, file claim with the transportation company immediately.

Your heater is equipped with a combustion safety pilot and automatic gas control valve. A pressure regulator installed on the L.P. gas tank maintains a constant pressure at the burner. In the event of a pilot failure, a safety pilot feature completely shuts off the flow of gas. The automatic control valve is the integral thermostat (bulb) type. The manual type valve has no thermostatic control and the gas flow to the main burner is either on or off. The manual valve is also equipped with a 100 percent safety shut-off which stops the flow of gas in the event of pilot failure.

Read the following instructions carefully
and

DO NOT DEVIATE FROM THE STEP BY STEP SEQUENCE

When installing this unit in mobile homes or travel trailers, the following minimum dimensions must be maintained:

Bottom of unit to floor—1 inch

Top of unit to ceiling—36 inches

Side of unit to adjacent wall—6 inches

THE MANUFACTURER DOES NOT GUARANTEE PROPER PERFORMANCE OF THIS HEATER UNLESS THESE INSTRUCTIONS ARE FOLLOWED.



S U B U R B A N

Suburban Manufacturing Company
P.O. Box 399
Dayton, Tennessee 37321

Form No. GT-6-3—3-76

INSTALLATION OF HEATER

- A. Select a location as near the center of the area to be heated as possible. Make certain there are no pipes, wires, etc., which would interfere with recessing the heater into the wall.
- B. Refer to Fig. 1. The 1" minimum dimension is to mount the heater flush with the floor. The heater may be mounted higher on the wall if desired. The 29½" maximum and 20" minimum enclosure thickness must be maintained in order for the vent tubes to overlap properly.
- C. Now cut the rectangular opening shown in Fig. 1 in the inside finished wall only. Cut the 6½"×6" hole in the outside wall only. Cut only one of the two 1" dia. holes shown for the gas line.

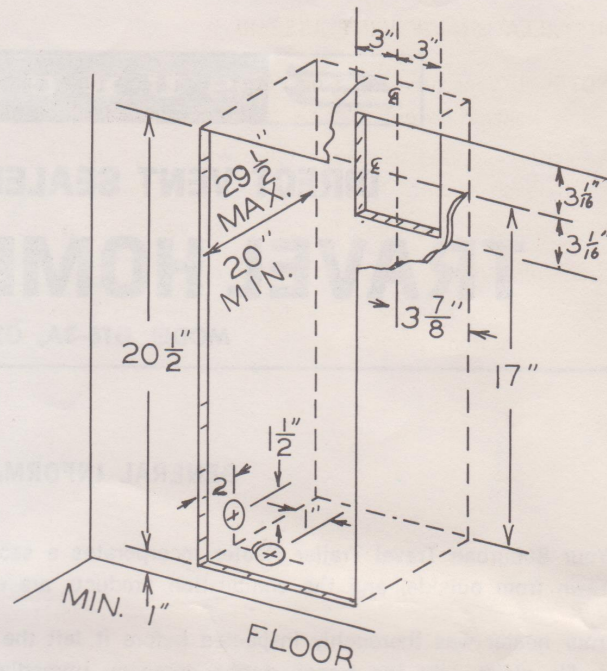


FIGURE 1

Pull forward on controls access door (B) on heater front (L), (Fig. 2), and remove door. Install rough-in box into rectangular opening in wall. Spacers on sides and top are provided to assure proper placement. Do not bend down. Secure rough-in box to wall with four screws (S) from parts bag (Fig. 2). Secure heater front (L) with metal screws (M). Attach knob (A) to controls access door with ¼" long machine screw. Install controls access door (B) into heater front (L).

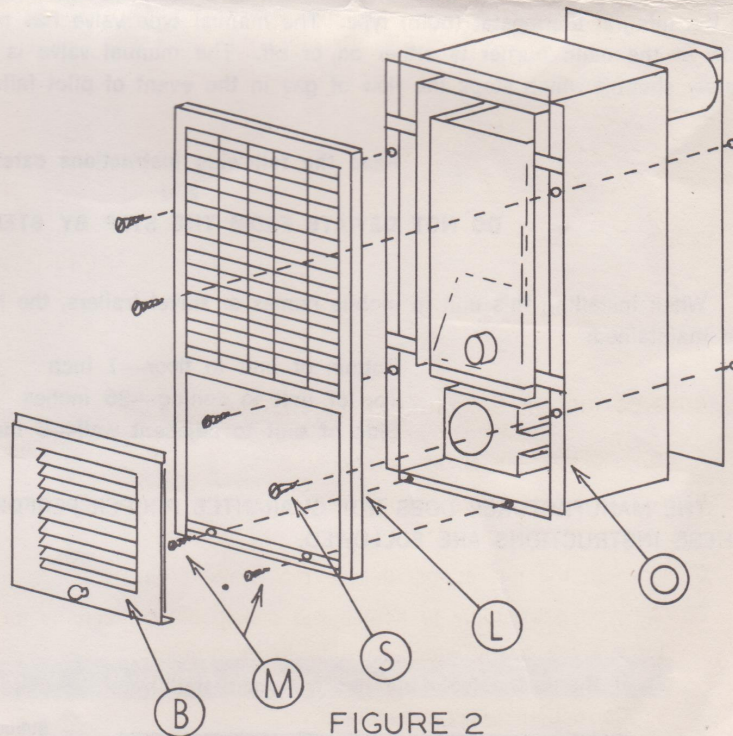
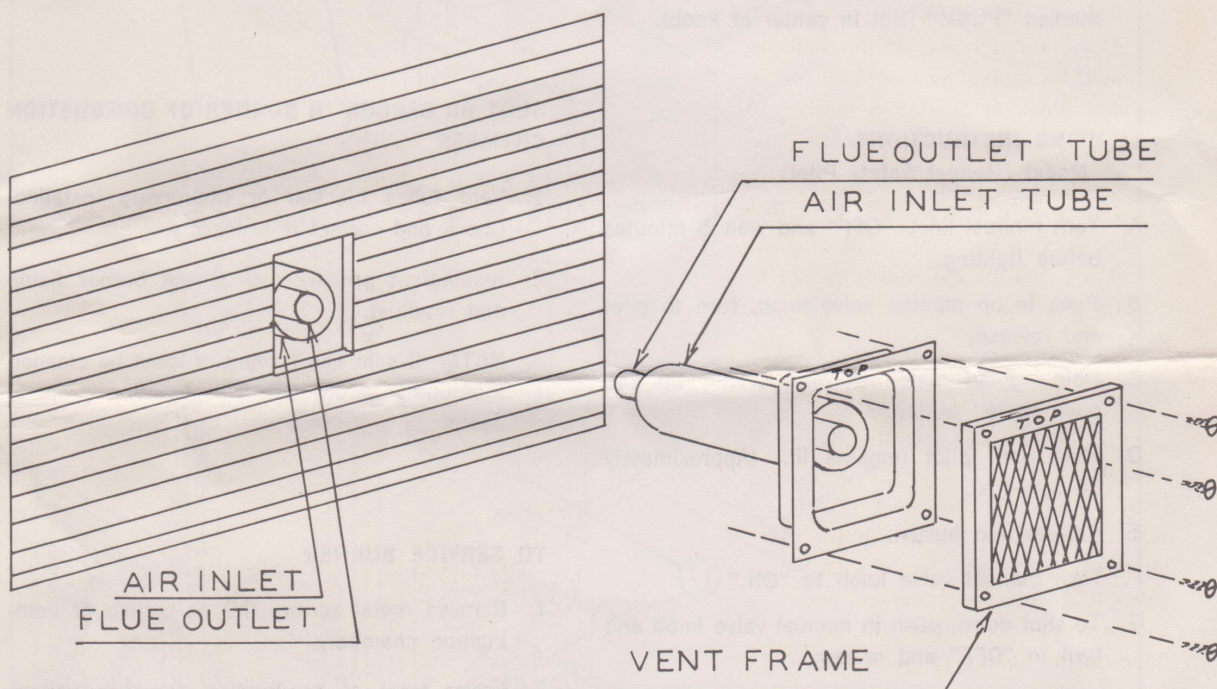


FIGURE 2

INSTALLATION OF VENT ASSEMBLY

NOTE: If vent tube must be cut, cut outside tube with care so as not to bend end of tube. Cut inside (flue outlet) tube 1" longer than large tube.

- A. Insert air inlet extension tube, with "top" up, into square cut-out in outside wall and over air inlet tube on heater. Flue outlet extension tube fits over outside of flue outlet tube.
- B. Push vent assembly forward until vent flanges are against wall.
- C. Caulk around all four sides of vent box.
- D. Install vent frame by pressing firmly into caulking around vent box and secure to wall with four screws from parts bag.



CONNECTION OF GAS SUPPLY TO HEATER

- A. Turn gas supply off at storage tank.
- B. All male pipe joints should be treated with a sealing compound resistant to the action of liquefied petroleum gases.
- C. Connect the gas supply line to the heater controls.
- D. Turn on gas supply to heater and check all connections for leaks.
 1. Apply a soapy water solution to each joint.
 2. If there is a leak, bubbles will foam and burst.
 3. Correct all leaks immediately.

LIGHTING INSTRUCTIONS

"A" Model (Automatic Thermostat)

Always turn gas off and wait 5 minutes for unburned gas to vent before attempting to light heater. Refer to card packed with the thermostat.

- A. Turn knob on gas valve to "OFF" and wait 5 minutes.
- B. Set thermostat to its lowest position.
- C. Turn knob on gas valve (G) to "PILOT."
- D. Open lighter door (C) and place knob at point marked "PUSH" (Not in center of knob).

LIGHTING INSTRUCTIONS

"S" Model (Manual Safety Pilot)

- A. Turn manual knob "OFF" and wait 5 minutes before lighting.
- B. Push in on manual valve knob, turn to pilot and release.
- C. Hold lighted match to pilot burner tip and push in red button.
- D. Hold until pilot remains lit. (Approximately 60 seconds).
- E. Release red button.
- F. Turn manual valve knob to "ON."
- G. To shut down, push in manual valve knob and turn to "OFF" and release.

Hold knob depressed for 30 seconds after pilot has ignited. Release knob—pilot should remain lit. If not, wait 5 minutes and repeat Steps B through E. After pilot remains lit, close lighter door and secure tightly with wingnut. Turn thermostat to its highest setting; burner will ignite. Set thermostat to desired temperature setting.

PILOT OUTAGE

1. Pilot lighter door not sealed.
 - a. This door **MUST BE CLOSED SECURELY.**

2. Defective thermocouple or valve.
 - a. Call your heating contractor.
3. Vent tubes leaking.
 - a. Recheck installation.
4. Thermocouple not properly heated.
 - a. The pilot flame must envelope one-half of thermocouple tip.
 - b. If it does not, adjust pilot flame by removing cover screw and turning set screw on valve.

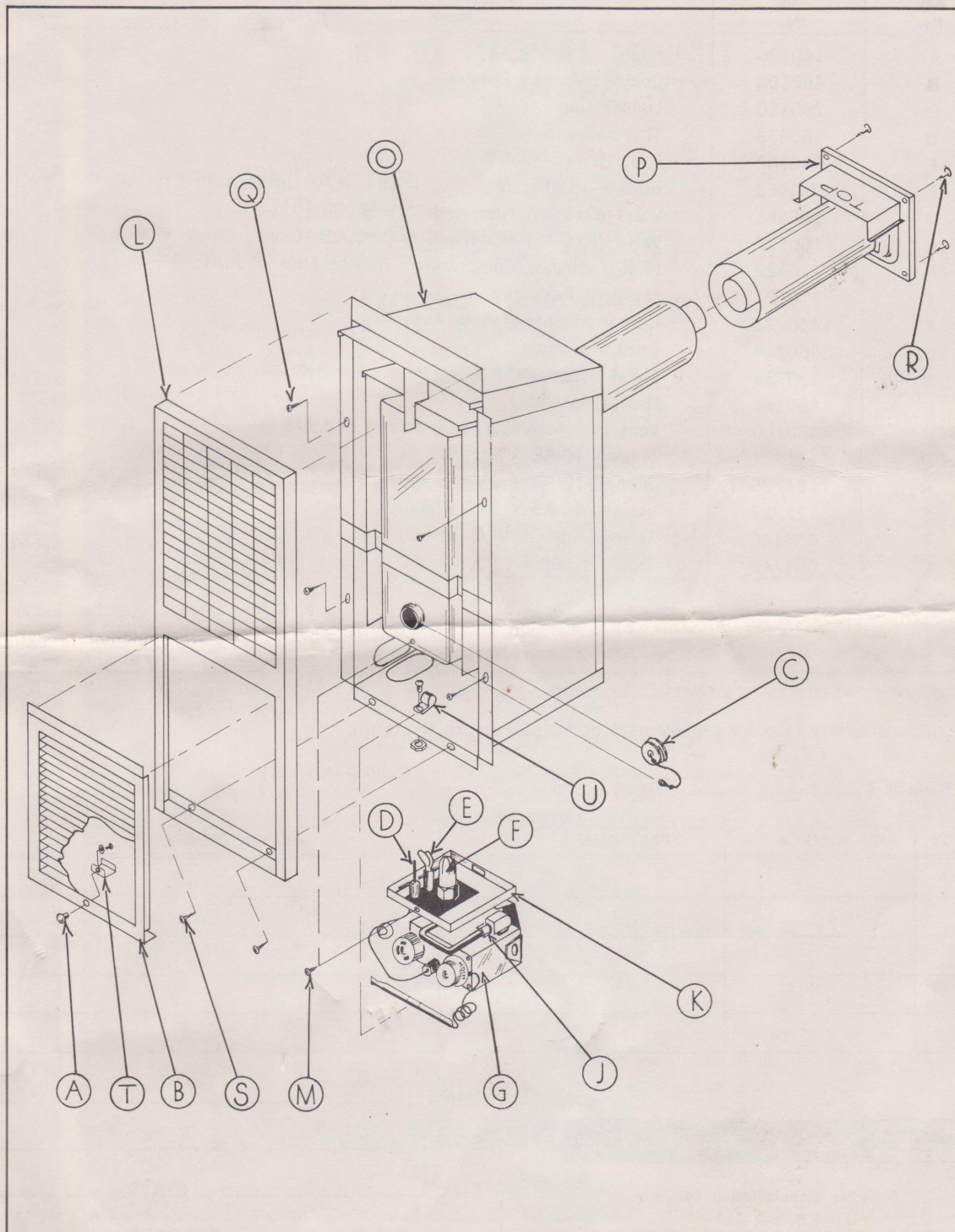
SOOT OR CARBON IN BURNER OF COMBUSTION CHAMBER

1. Vent tubes blocked or improperly installed. Check and correct if necessary.
2. Insufficient primary air. Check burner flame and readjust.
3. **NOTE:** If soot has formed, it must be cleaned thoroughly before unit will function properly again.

TO SERVICE BURNER

1. Remove metal screws (M) at bottom of combustion chamber.
2. Lower front of combustion chamber bottom (K) and push toward rear of heater until stud welded to back of combustion chamber is cleared.
3. Turn combustion chamber bottom one-fourth turn to the left.
4. Pull forward and tilt up until combustion chamber bottom is free of heater.
5. Reverse procedure to replace.

The controls compartment shall be kept clean and free of dust or lint. A small brush or vacuum cleaner may be used.



REPAIR PARTS LIST

Key No.	Part No.	Name
A	140136	Knob
B	450108	Controls Access Door
C	290110	Lighter Cap
D	160673	Thermocouple—
E	160707	Pilot Burner—
F	010560	Burner—Barber Mfg. Co. #654 #70 Orifice Drill
G	160671	Valve (GT6-3A) Honeywell #V-5000B-1011
G	160672	Valve (GT6-3S) Honeywell #C-5000B-1018
H	170422	Pilot Tubing w/Compression Fittings (Not Shown)
J	170421	Manifold Assembly
K	X450221	Burner Mounting Plate Assembly
L	X450114	Front Assembly
M	120739	Metal Screw—8AB-3/8 Phillips Pan HD
O	X450141	Heater Assembly
P	X450160	Vent Box Assembly with Screws and Frame
Q	121224	Screw—10-AB x 3/4 Phillips
R	121225	Screw—10-AB x 1 1/2 Phillips
S	121223	Screw—10-AB x 3/8 Phillips
T	450146	Spring Clip
U	061742	Strain Relief

If it becomes necessary to order replacement parts, please use this form.

MODEL NUMBER _____

QUANTITY	PART NUMBER	PART NAME	REASON ORDERED



Suburban Manufacturing Company
P.O. Box 399
Dayton, Tennessee 37321

NAME _____

STREET _____

CITY _____ STATE _____

ZIP CODE _____



CUT OUT AND USE AS A MAILING LABEL.

D-1293-1

RECREATIONAL VEHICLE LIMITED WARRANTY

PARTS

Suburban Manufacturing Company ("Suburban") warrants to the first purchaser the heating unit against defects in material and workmanship under normal use for a period of one year from date of first purchase of the recreational vehicle. The heat exchanger is warranted to the first purchaser against rustout and burnout for a period of 5 years from date of first purchase of the recreational vehicle. In-warranty parts will be replaced at no charge for the parts. Labor will be paid only as set forth in the "In-Warranty" Service Policy below.

EXCLUSIONS AND LIMITATIONS

This limited warranty is void if the heating unit is improperly installed, tampered with, or not operated in accordance with the Installation, Operating and Service Instructions book of Suburban, or within its proper voltage and fuel ratings as design certified by the American Gas Association. This warranty is in lieu of all other express warranties, is limited to replacement of defective parts and does not cover any damages resulting from failure of the heating unit. Any implied warranties are limited to one year from the date of first purchase of the recreational vehicle. Malfunctions caused by improper installation or operation, accident, misuse, abuse, neglect or other circumstances beyond Suburban's control such as fire, flood or other acts of God are not covered by this limited warranty.

"IN-WARRANTY SERVICE POLICY"

Suburban Manufacturing Company, with the cooperation of its authorized service centers, will endeavor to assure customer satisfaction. If there is a defect of material or workmanship in the heating unit within the limited warranty period, Suburban will pay a service allowance to the authorized service center under the terms of Suburban's contract with the service center. In-warranty repairs cover one year from date of original purchase; all other service expenses over one year will be made at the expense of the owner-user. The owner-user is responsible for transportation of the heating unit to and from the service center. A list of authorized service centers is enclosed with Suburban's Installation, Operating and Service Instructions book.

EXCLUSIONS AND LIMITATIONS

The exclusions and limitations contained in the limited warranty apply to this service policy. In addition, certain services are not included under in-warranty services. They are:

1. Initial checkout and subsequent checkouts which determine that the furnace is operating properly.
2. Cleaning.
3. Water or dirt in controls, fuel lines, and gas tanks.
4. Broken or shorted thermostat wires.
5. Restriction or alteration of warm air or return air circulation.
6. Thermostat adjustments.
7. Instructing owners in operation.
8. Adjusting primary air.
9. Pilot adjustment.
10. Electrode adjustments.
11. Clogged orifice.



SUBURBAN MANUFACTURING COMPANY

DAYTON, TENNESSEE



BOX 399, DAYTON, TENNESSEE 37321