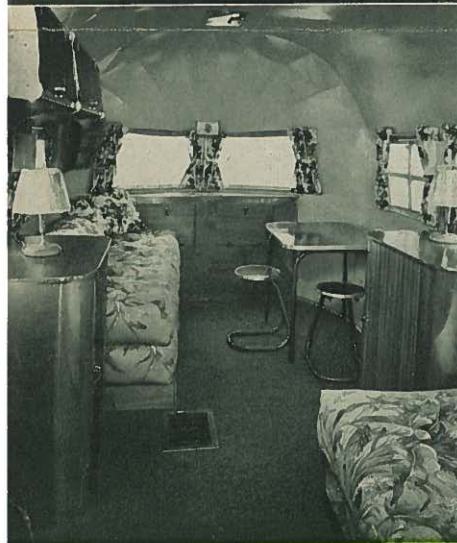
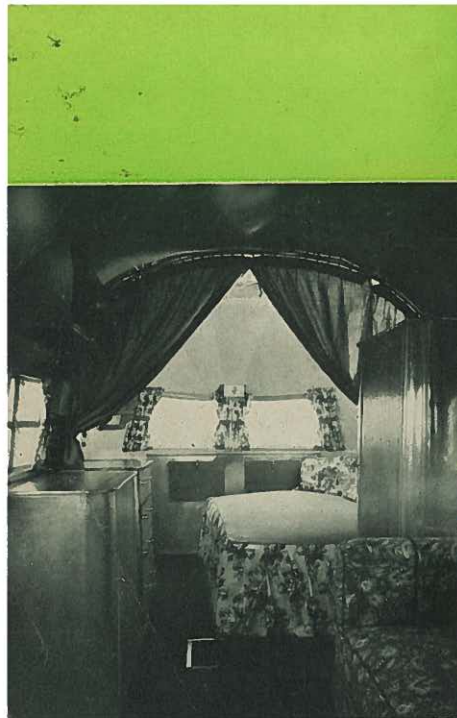


THE CURTIS WRIGHT *Clipper*
IS FOR THOSE WHO LOVE TO TRAVEL

Here it is! . . . America's masterpiece of light weight and streamlined design. It's built by war-experienced aircraft engineers and craftsmen especially for those experienced trailer enthusiasts who appreciate what **lightweight** flexibility means. Body length is a full 20 feet, yet weight is approximately 1500 pounds. (Slightly more or less depending upon interior equipment.) Shell alone weighs but 1240 pounds. **Here's amazing strength of construction!** It's so perfectly **stressed** and designed with a **minimum**



of air resistance that you zoom over hills in high . . . over straight stretches . . . as fast as you care to "let 'er out!" Don't worry about furnishings or built-in features for bracing or balance of any kind. Place the furniture **wherever** you want it. The velvet-smooth Clipper takes the hard knocks as **easily** as you expect this thoroughbred to do it. Easy to hook on . . . unhook . . . push around by hand. Unless you look behind, **you hardly know the Clipper is there!** Travel luxury at its peak!"



THE *Clipper* IS FOR THOSE WHO
LOVE BEAUTY AND COMFORT

Here is the truly sumptuous lounge car discriminating people love! The **decor** is smartly modern. Gay interiors with a blue-lacquered California sky. Specially-designed lightweight furniture of mahogany and contoured aluminum. Colorful, modernistic plastic lamps and shades. Colorful drapes. Colorful, plastic dishes conveniently racked in the galley. Full vision **everywhere**: glass windows around the entire body; plexiglass front and back; glass on the sides.

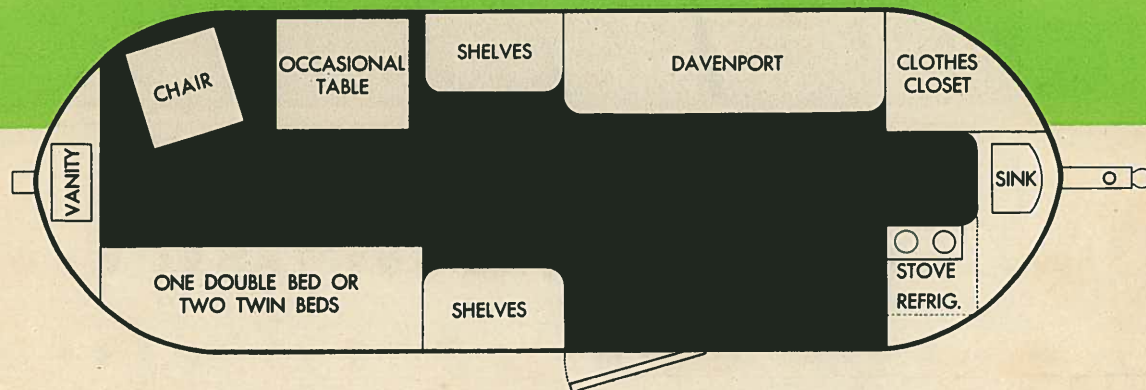
Sleeping arrangements are optional: (1) A fixed, double bed with a box and inner spring. (2) A davenport that is either a seat or double bed. (3) Our own special davenport which makes one double bed or two singles, or any combination of the above. All upholstery is deeply tufted. **Only the Clipper has such beauty and comfort!**

ONE AIRPLANE - TYPE BODY

**extremely light weight (1240 lbs. for the shell)
all metal . . . safe . . . everlasting . . . fireproof**

The Clipper may be ordered as a **shell alone** without furnishings.
Supply your own furniture if you wish. Or standard furniture will be supplied.
Furniture pieces can be re-arranged
to suit your particular needs for a nominal charge.

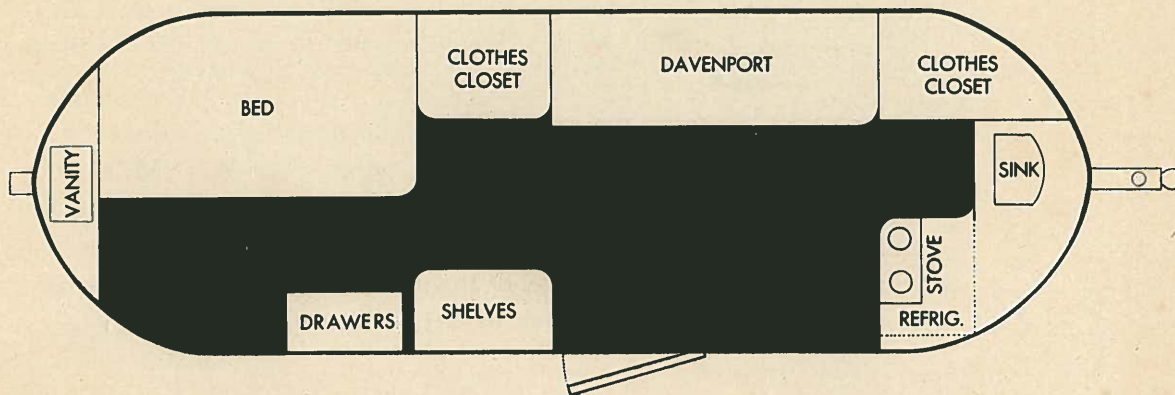
TWO FLOOR PLANS



This Plan provides very spacious interior. 1 large clothes closet, galley with 2 - burner stove, large storage compartment, 50-lb. ice box, 1 davenport, 2 chests of shelves, large storage compartment, vanity in rear . . . plus twin bed that can be made into 1 double bed or 2 singles.

1 for those who prefer a spacious travel trailer with minimum weight.

2 for those who prefer storage space, clothes closets, with bed, oven stove.



This Plan provides same galley arrangement as above. 2 large clothes closets, 1 chest of drawers, 1 chest of shelves, 1 fixed double bed, 1 davenport and combined storage compartment and vanity. Ample floor space for a stove with an oven to right of door in either of above arrangements.

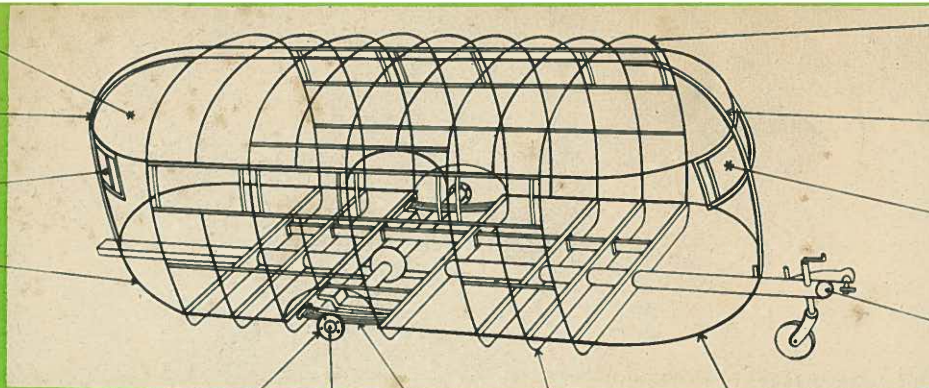
ENTIRE TRAILER INSULATED
WITH 1½" PLASTICIZED SPUN GLASS

1½" HEAT TREATED
ALUMINUM TUBING

PLEXIGLASS

1" STEEL
CHROME-MOLY TUBING

HALF INCH
PLYWOOD FLOORING



FORMED ALUMINUM RIBS

1½" HEAT TREATED
ALUMINUM TUBING

PLEXIGLASS

4" STEEL
SEAMLESS SHELBY
STEEL TUBE

RUNNING GEAR DROP AXLE LEAF SPRING ALUMINUM STRINGERS 1" STEEL CHROME-MOLY TUBING

SPECIFICATIONS

Structurally The Clipper is built like a fish. A 4-inch steel tube runs from one end to the other and represents the fish's backbone. Formed duraluminum ribs (as in an airplane) are attached to this tube. The floor is ½ inch plywood, supported by aluminum stringers every 16 inches. Exterior and interior "skins" are 24 ST Alclad aluminum alloy. Formed "skins," bows, channel sections, etc., are made of 24 SO material and are heat treated in the usual aircraft manner. Fastenings are principally bucked rivets, though a few cherry rivets and a very few sheet-metal screws are used. There are no nails whatever.

Running gear is a steel axle with standard automobile tread to trail on dirt roads in the track of the towing car. Standard

leaf springs. Brakes, though not usually needed on such a **lightweight** trailer, are optional and easily installed at nominal cost. Wheels vary, depending on what is available, though any type can be fitted, if obtainable, at small extra charge. (Trailer should have same type and size of wheels as towing car, to take care of the spare situation when needed.) Standard tires are 600 x 16. Steel tubular bumpers are supplied, front and rear. Insulation is plasticized spun glass 1½" thick in side walls and roof; 4" in the floor. (Thus The Clipper is exceptionally cool in summer, warm in winter. Faucet and sink are standard: a pump and a sanitary, easily-cleaned G.I. water can will be supplied at nominal extra cost. Butane tank and 2 burner stove is standard equipment. Stove with oven at small extra cost. Butane floor furnace is standard equipment.

DISTRIBUTED BY

MAIN OFFICE
740 West Valley Blvd.
Puente, California

PLANT
1621 Atlantic St.
Los Angeles 21, Calif.

CURTIS WRIGHT INDUSTRIES (TRAILER DIVISION) INC.